



# TRAKTOR KONTROL F1



Setup Guide



The information in this document is subject to change without notice and does not represent a commitment on the part of Native Instruments GmbH. The software described by this document is subject to a License Agreement and may not be copied to other media. No part of this publication may be copied, reproduced or otherwise transmitted or recorded, for any purpose, without prior written permission by Native Instruments GmbH, hereinafter referred to as Native Instruments.

“Native Instruments”, “NI” and associated logos are (registered) trademarks of Native Instruments GmbH.

Mac, Mac OS, GarageBand, Logic, iTunes and iPod are registered trademarks of Apple Inc., registered in the U.S. and other countries.

Windows, Windows Vista and DirectSound are registered trademarks of Microsoft Corporation in the United States and/or other countries.

All other trade marks are the property of their respective owners and use of them does not imply any affiliation with or endorsement by them.

Document authored by: Native Instruments GmbH

Special thanks to the Beta Test Team, who were invaluable not just in tracking down bugs, but in making this a better product.

---

## Germany

Native Instruments GmbH  
Schlesische Str. 29-30  
D-10997 Berlin  
Germany  
[www.native-instruments.de](http://www.native-instruments.de)

## USA

Native Instruments North America, Inc.  
6725 Sunset Boulevard  
5th Floor  
Los Angeles, CA 90028  
USA  
[www.native-instruments.com](http://www.native-instruments.com)



© Native Instruments GmbH, 2012. All rights reserved.

---

---

# Table of Contents

<b>1</b>	<b>Welcome to the TRAKTOR KONTROL F1 Setup Guide .....</b>	<b>6</b>
1.1	What Is Included in the Box? .....	6
1.2	About this Setup Guide .....	6
1.3	Document Conventions .....	6
<b>2</b>	<b>Software Installation .....</b>	<b>8</b>
2.1	Read Before Installing .....	8
2.2	Installation on Mac OS X .....	8
2.2.1	Locate and Start the Installation Program .....	8
2.2.2	Select the Components to Install .....	9
2.2.3	Enter Your Password .....	11
2.2.4	Complete the Installation .....	11
2.3	Installation on Windows .....	13
2.3.1	Locate and Start the Installation Program .....	13
2.3.2	Confirm the Features to Install .....	13
2.3.3	Confirm the Application Installation Path .....	15
2.3.4	Select Your Hardware Drivers .....	16
2.3.5	Complete the Software Installation .....	16
<b>3</b>	<b>Product Activation with Service Center .....</b>	<b>18</b>
3.1	Activating Your Product Online .....	18
3.1.1	Start Service Center .....	18
3.1.2	Log In Into Your User Account .....	19
3.1.3	Activate the Product .....	20
3.1.4	Finish the Online Activation .....	21
3.2	Updating Your Product .....	22
3.2.1	Select Updates .....	22
3.2.2	Download the Updates .....	23

---

3.2.3	Open Your Download Folder .....	24
3.2.4	Install the Updates .....	25
3.3	Activating Your Product Offline .....	25
3.3.1	Start the Offline Activation .....	26
3.3.2	Create the Activation Request File .....	27
3.3.3	Enter the Serial Number .....	28
3.3.4	Transfer the Activation Request File .....	29
3.3.5	Open the Activation Return File .....	30
3.3.6	Finish the Offline Activation .....	31
<b>4</b>	<b>Connecting the TRAKTOR KONTROL F1 to Your Computer .....</b>	<b>32</b>
4.1	Connecting the Controller on Mac OS X .....	32
4.2	Connecting the Controller on Windows .....	33
<b>5</b>	<b>What's Next? .....</b>	<b>35</b>

# 1 Welcome to the TRAKTOR KONTROL F1 Setup Guide

Thank you for purchasing the TRAKTOR KONTROL F1 DJ controller. On behalf of the entire Native Instruments team, we hope you are truly inspired by this product.

## 1.1 What Is Included in the Box?

The TRAKTOR KONTROL F1 box contains the following items:

- The TRAKTOR KONTROL F1 controller
- A USB cable
- A registration flyer with your TRAKTOR PRO 2 software serial number, your TRAKTOR KONTROL F1 hardware serial number, and a link to the hardware registration page, where you can register your hardware and download the TRAKTOR software
- A Track Deck overlay for using the F1 as a Track Deck controller
- A safety instructions flyer

## 1.2 About this Setup Guide

This Setup Guide will help you to install the TRAKTOR software on your computer ([↑2, Software Installation](#)), activate your TRAKTOR version using Service Center ([↑3, Product Activation with Service Center](#)), and to connect the TRAKTOR KONTROL F1 controller to your computer ([↑4, Connecting the TRAKTOR KONTROL F1 to Your Computer](#)). In [↑5, What's Next?](#) you will learn how to proceed once that software and hardware are ready to go.

## 1.3 Document Conventions

This section introduces you to the signage and text highlighting used in this document. This document uses particular formatting to point out special facts and to warn you of potential issues. The icons introducing these notes let you see what kind of information is to be expected:



Whenever this exclamation mark icon appears, you should read the corresponding note carefully and follow the instructions and hints given there if applicable.



This light bulb icon indicates that a note contains useful extra information. This information may often help you to solve a task more efficiently, but does not necessarily apply to the setup or operating system you are using; however, it's always worth a look.

Furthermore, the following formatting is used:

- Text appearing in (drop-down) menus (such as *Open...*, *Save as...* etc.) and paths to locations on your hard drive or other storage devices is printed in *italics*.
  - Text appearing elsewhere (labels of buttons, controls, text next to checkboxes etc.) is printed in **blue**. Whenever you see this formatting applied, you will find the same text appearing somewhere on the screen.
  - Important names and concepts are printed in **bold**.
  - References to keys on your computer's keyboard you'll find put in square brackets (e.g., "Press [Shift] + [Return]").
- Single instructions are introduced by this play button type arrow.

Results of actions are introduced by this smaller arrow.

## 2 Software Installation

### 2.1 Read Before Installing

Before starting the TRAKTOR software installer, here are some points to be aware of:

- Make sure you have downloaded the TRAKTOR software to your computer by following the instructions on the registration page:  
[www.native-instruments.com/go-f1](http://www.native-instruments.com/go-f1)  
If you have already registered your device but need to download the installer again, you can find the relevant downloads in the "My Account" section of the NI website:  
<https://www.native-instruments.com/en/my-account/my-products-serials>
- Please **carefully review the installer screens** and the suggested installation paths in order to avoid that any unwanted folders are created on your hard disk.
- **Moving any folders** related to Native Instruments software after installation **is not recommended**. Future software updates rely on the directory locations set during initial installation.

### 2.2 Installation on Mac OS X



At the end of the installation process, you will need to restart your computer. Please save your work and close all applications before proceeding.

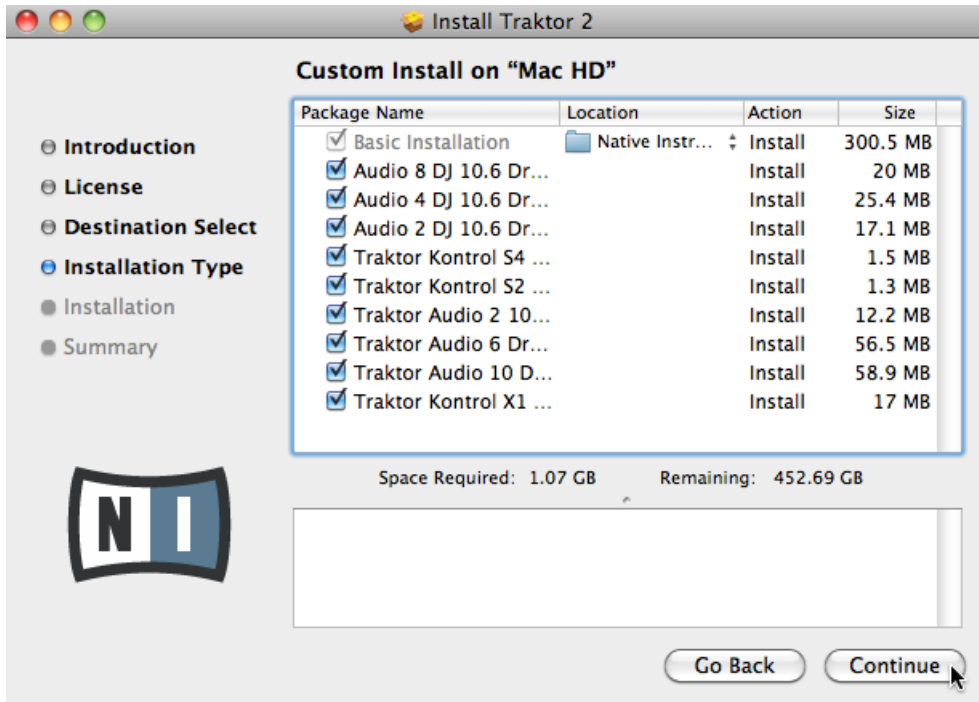
#### 2.2.1 Locate and Start the Installation Program

1. Locate and unpack the downloaded installer package file on your computer.
2. Double-click the **Traktor 2 Installer.mpkg** file to start the installation procedure.
3. Follow the on-screen instructions.



## 2.2.2 Select the Components to Install

After you have accepted the software license agreement, the installer window displays the components available for installation. This installer screen also contains information about how much disk space the individual components will use.



The components selection screen of the installation program.



There is no dedicated entry for your TRAKTOR KONTROL F1 in the components selection screen as the controller does not require a dedicated driver under MAC OS X. It is recommended to keep all remaining drivers selected unless you have a specific reason to deselect one (such as if the driver is already installed on your computer, or you are very sure you will never use the device with TRAKTOR).

**Basic Installation:** This installs the TRAKTOR software along with its documentation. This component cannot be deselected. It also installs the Service Center application (required for activation of your product) and the Controller Editor application, which allows you to configure the controller's MIDI assignments for using the controller with other applications than TRAKTOR.

**Audio 8/4/2 DJ Drivers:** This installs drivers for the AUDIO 8 DJ, AUDIO 4 DJ and AUDIO 2 DJ audio interfaces by Native Instruments. If you do not intend to use any of these audio interfaces, you can deactivate the checkboxes.

**Traktor Kontrol S4:** This installs the driver for the TRAKTOR KONTROL S4 controller. If you do not intend to use a TRAKTOR KONTROL S4 controller on your computer, you can deactivate the checkbox.

**Traktor Kontrol S2:** This installs the driver for your TRAKTOR KONTROL S2 controller. If you do not intend to use a TRAKTOR KONTROL S2 controller on your computer, you can deactivate the checkbox.

**Traktor Audio 2/6/10 Drivers:** This installs the drivers for the TRAKTOR AUDIO 2, TRAKTOR AUDIO 6 and TRAKTOR AUDIO 10 audio interfaces by Native Instruments. If you do not intend to use any of these audio interfaces, you can deactivate the checkboxes.

**Traktor Kontrol X1:** This installs the driver for the TRAKTOR KONTROL X1 controller. If you do not intend to use a TRAKTOR KONTROL X1 controller on your computer, you can deactivate the checkbox.

## **Background Components**

These components are not displayed in the installer window, but are installed depending on your system configuration:

**Controller Editor:** The Controller Editor application allows you to configure your controller for use as a MIDI controller with applications other than the TRAKTOR software. This component will automatically be installed unless a newer version of Controller Editor already exists on your computer.

**Service Center:** The Service Center application is required for activation of the TRAKTOR software. It will be installed independent of the selected drivers (unless a newer version of Service Center already exists on your computer).



It is strongly recommended to install the TRAKTOR software to the default location. If you still need to change the install location, click on the folder icon in the [Location](#) column and select the desired folder.

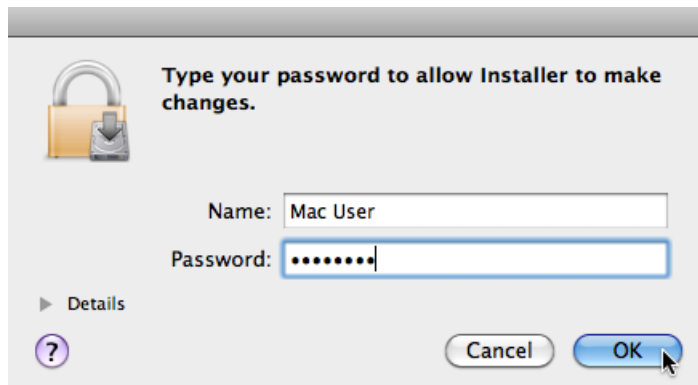
- After you have customized the installation as required, click [Continue](#) and then follow the on-screen instructions.

### 2.2.3 Enter Your Password

Before installing the selected components, the installer will prompt you to enter your Mac OS X password. This is a standard behavior on Mac OS X that makes sure you are aware of the changes the installer is about to make.



The Mac OS X user account you are using needs to have Administrator privileges.

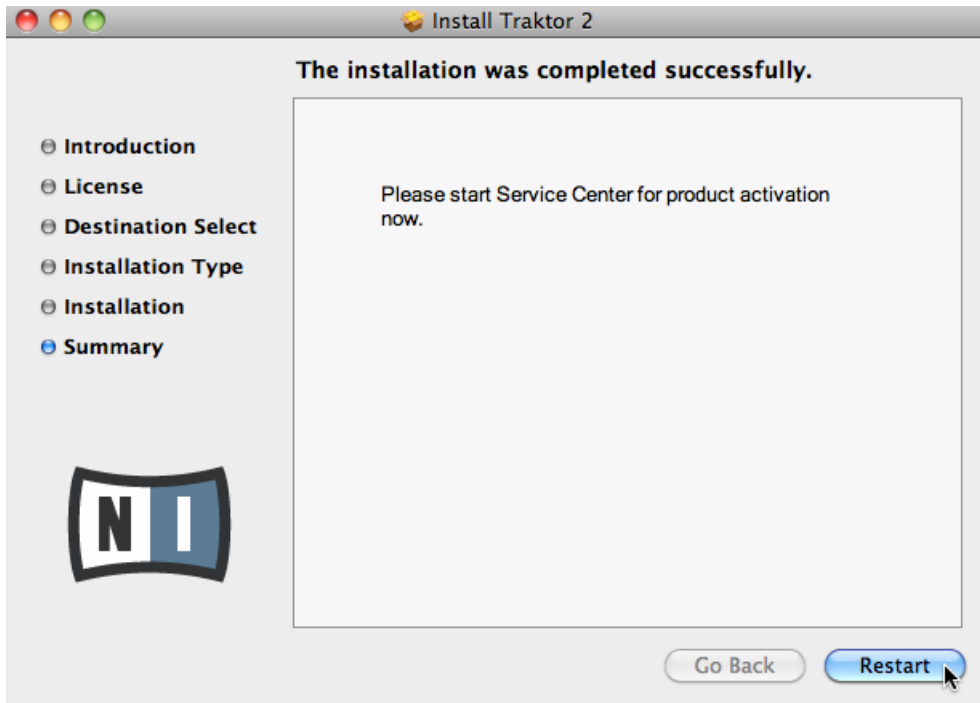


The Mac OS X password prompt.

- To proceed, enter your password and click [OK](#).
- The selected components will be installed.

### 2.2.4 Complete the Installation

After the components have been installed, you need to restart your computer.



The final screen of the installation program.

- ▶ On the last screen of the installation program, click [Restart](#) to restart your computer and complete the software installation.
- Your computer will immediately restart.
- ▶ After your computer has restarted, continue reading in chapter [↑3, Product Activation with Service Center](#) of this Setup Guide for information about product activation.

## 2.3 Installation on Windows



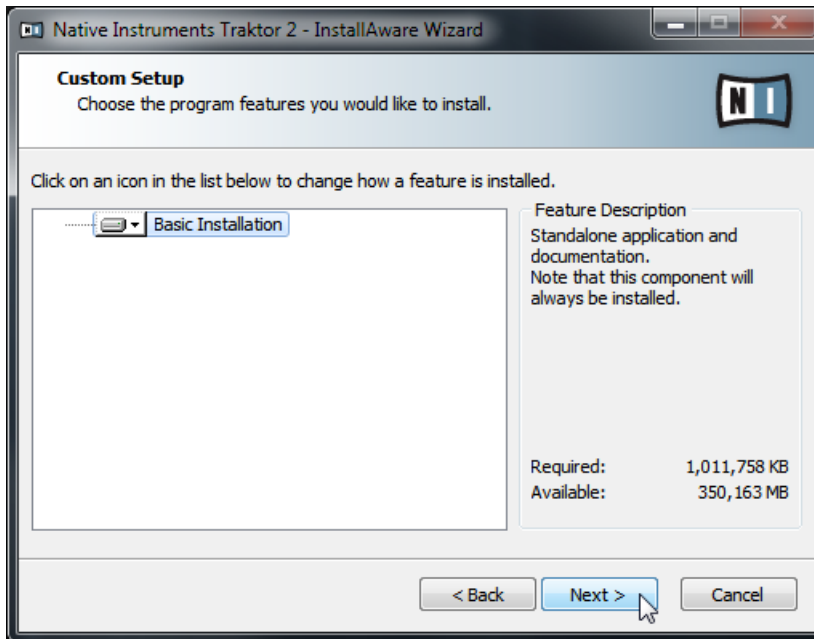
If you are installing the TRAKTOR software on Windows Vista or Windows 7, you may need to turn off Windows User Account Control (UAC) before you can proceed. For further information on this, please refer to the relevant documentation. In addition to this, it may be necessary to disable your anti-virus software during installation.

### 2.3.1 Locate and Start the Installation Program

1. Locate and unpack the downloaded installer package file on your computer.
2. Double-click the **Traktor 2 Setup.exe** file to start the installation procedure.
3. Follow the on-screen instructions.

### 2.3.2 Confirm the Features to Install

After you have accepted the software license agreement, the installer window displays the features available for installation.



The components selection screen of the installation program.

**Basic Installation:** This installs the TRAKTOR software along with its documentation. This component cannot be deselected.

## Background Components

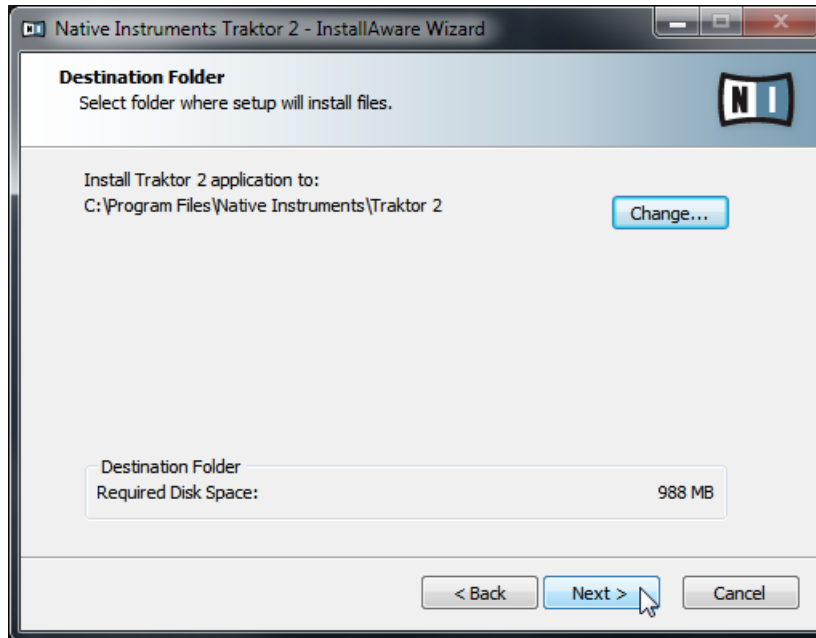
These components are not displayed in the installer window, but are installed depending on your system configuration:

**Controller Editor:** The Controller Editor application allows you to configure your controller for use as a MIDI controller with applications other than the TRAKTOR software. This component will automatically be installed unless a newer version of Controller Editor already exists on your computer.

**Service Center:** The Service Center application is required for activation of the TRAKTOR software. It will be installed independent of the selected drivers (unless a newer version of Service Center already exists on your computer).

- Click [Continue](#) and then follow the on-screen instructions.

### 2.3.3 Confirm the Application Installation Path



The software installation path screen of the installation program.



It is strongly recommended to install the TRAKTOR software to the default location. If you still need to change the install location, click [Change](#) to open a Folder Selection dialog and select the desired destination folder.

You will be asked to select and confirm an installation path for the TRAKTOR software.

- Click [Next](#) to proceed.

### 2.3.4 Select Your Hardware Drivers

After defining/confirming the program's installation path, you will be presented with a number of driver selection screens. It is recommended to select all drivers from the driver selection screens unless you have a specific reason to deselect a driver (such as if the driver is already installed on your computer, or you are very sure you will never use the device with TRAKTOR).



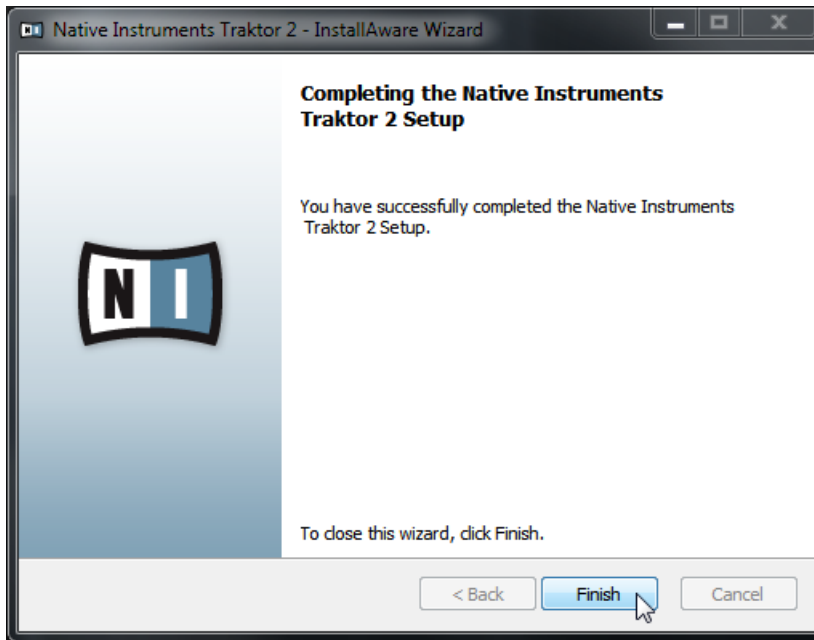
The driver selection screen holding the F1 driver selection.

1. Make sure to select the TRAKTOR KONTROL F1 driver from the relevant driver selection screen.
2. Click [Next](#) to proceed.

### 2.3.5 Complete the Software Installation

Once you have selected the required driver(s) and confirmed your selection, you will be forwarded to the last screen of the installation program.





The final screen of the installation program.

- ▶ On the last screen of the installation program, click [Finish](#) to complete the installation and exit the installation program.
- ▶ Continue reading in chapter [↑3, Product Activation with Service Center](#) of this Setup Guide for information about product activation.

## 3 Product Activation with Service Center



This section uses a placeholder name ("NI Product") on all screenshots. The relevant section on your screen will display the name of the Native Instruments product you are activating.

### 3.1 Activating Your Product Online



Skip to chapter [↑3.3, Activating Your Product Offline](#) if your computer is not connected to the Internet.

#### 3.1.1 Start Service Center

1. Locate the Service Center application on your hard disk. During installation, a folder labeled **Native Instruments** was created in the Applications (Mac OS X) / Program Files (Windows) folder. Within this folder, a subfolder labeled **Service Center** holds the corresponding application.
2. Double-click the Service Center application to start the activation procedure.



It is necessary to activate your Native Instruments product in order to use its full functionality.

### 3.1.2 Log In Into Your User Account

SERVICE CENTER

Log in

Please log in using your e-mail address and password.

E-mail address

Password

☐ Log me in automatically on next startup

› Forgot your password?

› Create new User Account

▶ Log in

Status:  
Online

The log-in screen of Service Center.

- ▶ Log in with your e-mail address and Native Instruments password.
- ▶ If you do not have a Native Instruments account yet, click on [Create new User Account](#). Fill in the address form. The password will be sent to you via e-mail.

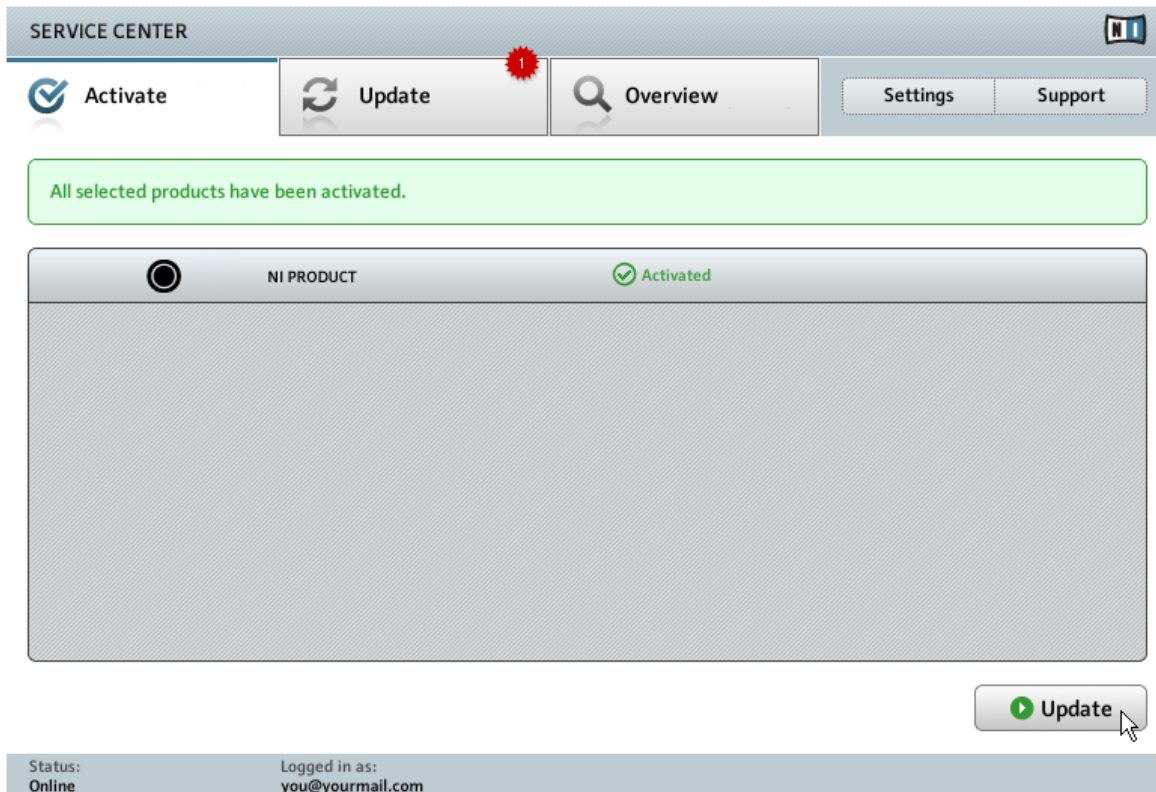
### 3.1.3 Activate the Product

The screenshot shows the 'SERVICE CENTER' interface. At the top, there's a navigation bar with 'Activate' (highlighted with a checkmark icon), 'Update' (refresh icon), 'Overview' (magnifying glass icon), 'Settings', and 'Support'. Below this is a yellow instruction box: 'Enter the serial numbers for the products you want to activate.' The main area contains a window titled 'NI PRODUCT' with a header bar showing a power button, the title, and several input fields. The first field contains '12345', the second '67890', and the third '09'. Below the input fields is a large grey rectangular area. At the bottom right of this area is an 'Activate' button with a green checkmark icon. The footer bar shows 'Status: Online' and 'Logged in as: you@yourmail.com'.

The product activation screen of Service Center.

1. Enter the software serial number in the number field. The software serial number is located on the registration flyer, which you can find in your TRAKTOR KONTROL F1 product box.
2. Click [Activate](#) to proceed.

### 3.1.4 Finish the Online Activation



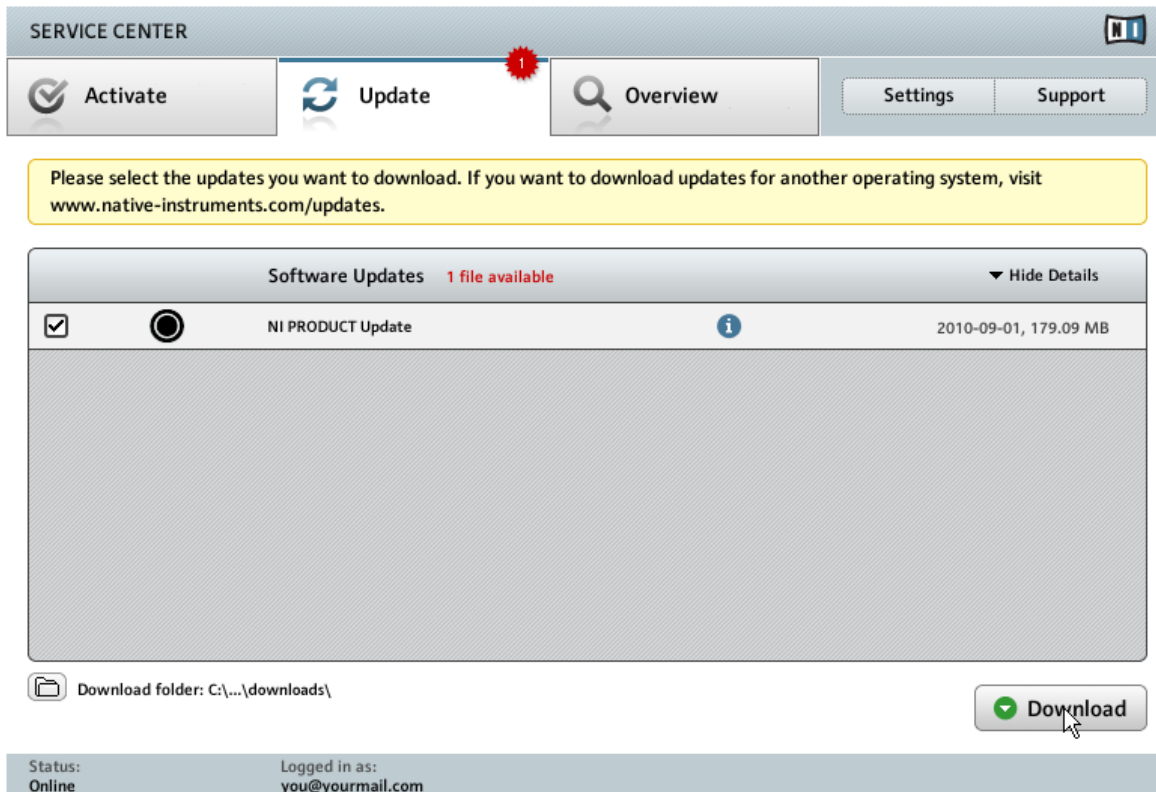
Service Center confirming the product activation.

Service Center confirms that the product has been activated successfully. A search for updates will start automatically.

- If updates for any of the activated products are available, the button in the bottom right corner of the screen reads [Update](#). To download the updates, click the [Update](#) button and proceed with chapter [↑3.2, Updating Your Product](#).
- If no updates are available, the button in the bottom right corner of the screen reads [Exit](#). You can click it to close Service Center.

## 3.2 Updating Your Product

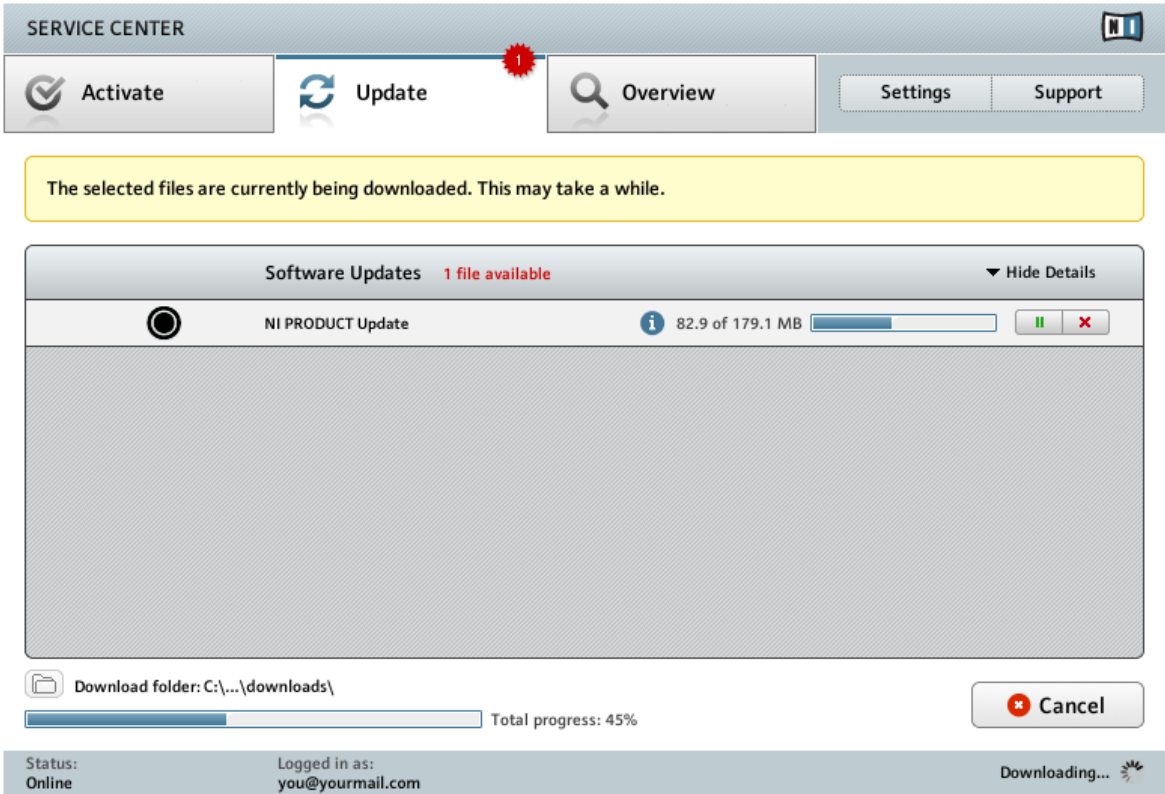
### 3.2.1 Select Updates



The product update screen of Service Center.

1. In Service Center, click the [Update](#) tab to view a list of available updates.
2. Select the updates you want to download by checking the checkboxes on the left. We recommend downloading all preselected updates.
3. Click [Download](#). The download will start.

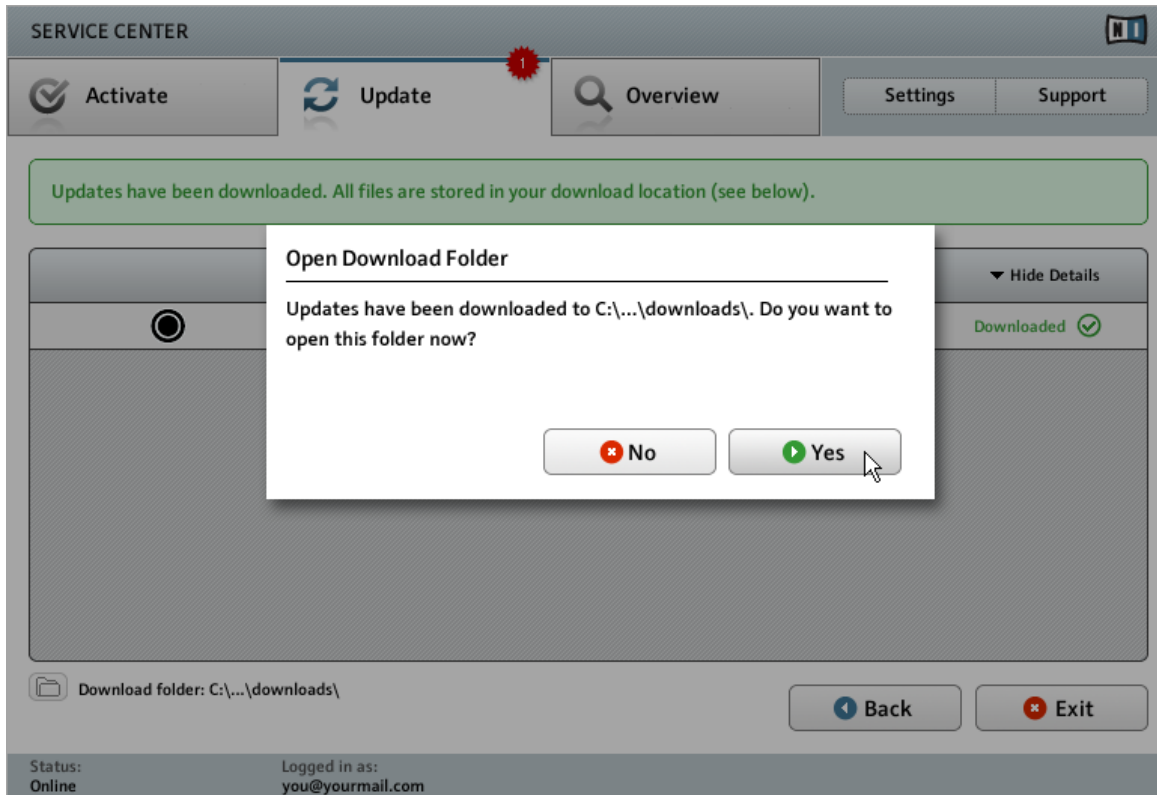
### 3.2.2 Download the Updates



The product update is in progress.

Depending on the file size and the speed of your internet connection, downloading the files may take a while. We strongly recommend that you always install the latest updates.

### 3.2.3 Open Your Download Folder



Service Center confirming all updates were downloaded, and offering to open the download folder.

After all files have been downloaded successfully, you will be asked to open the download folder.

- ▶ Click [Yes](#) to open the download folder.
- ▶ After the download folder has opened, you can quit Service Center by clicking [Exit](#).



### **3.2.4 Install the Updates**

1. Launch the first installer file from the download folder.
2. Follow the instructions of the Installation Wizard.
3. Proceed until you have installed all updates.

## **3.3 Activating Your Product Offline**

If the computer you want to use Native Instruments products on is permanently not connected to the internet, you can activate the products utilizing the Offline activation procedure. Note that you will need a second computer that is connected to the internet.

### 3.3.1 Start the Offline Activation

SERVICE CENTER

Internet connection

Service Center was unable to establish an internet connection. How do you wish to proceed?

Try connecting to the internet again

Make sure that your computer is connected to the internet.

▶ Retry

Use a proxy server to connect to the internet

Host

Port

▶ Proxy

Continue without connecting to the internet

Please note: You will have to transfer an Activation Request File to a computer with internet access.

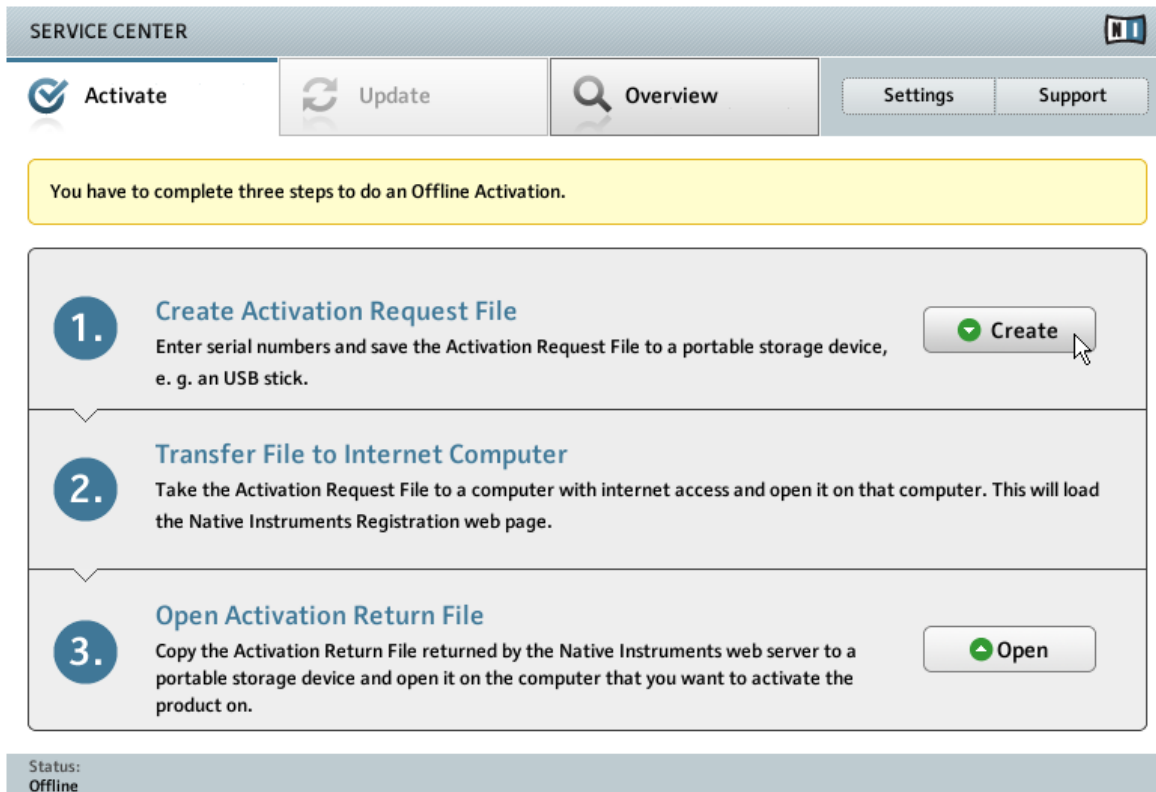
▶ Offline

Status:  
Pending...

The internet connection screen of Service Center.

1. Start Service Center. If no internet connection is detected, you will be redirected to the [Internet connection](#) screen pictured above.
2. In the [Continue without connection to the internet](#) area at the bottom of the screen, click [Offline](#). You will be forwarded to the [Activate](#) screen.

### 3.3.2 Create the Activation Request File



The offline activation screen of Service Center.

- On the [Activate](#) screen, click [Create](#). The [Activate](#) screen will display fields in which to enter the serial number (see next step).

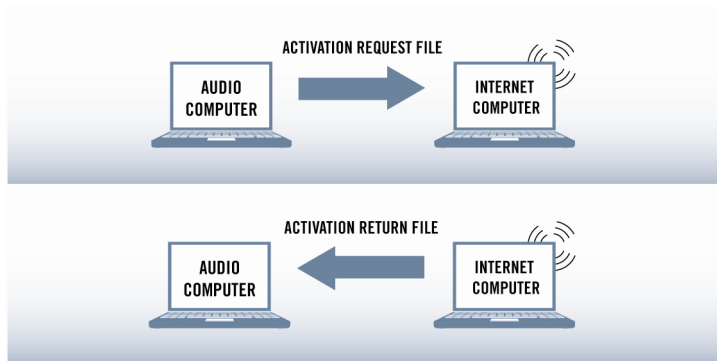
### 3.3.3 Enter the Serial Number

The screenshot shows the 'SERVICE CENTER' interface. At the top, there's a navigation bar with 'Activate' (checked), 'Update', 'Overview', 'Settings', and 'Support'. Below this is a yellow instruction box: 'Enter the serial numbers for the products you want to activate.' The main area is a window titled 'NI PRODUCT' with a large empty text field for serial numbers. Above the field are five small input boxes, the last of which is highlighted. At the bottom right of the window are 'Back' and 'Create' buttons. A status bar at the very bottom shows 'Status: Offline'.

The product activation screen of Service Center.

1. Enter the software serial number in the number field. The software serial number is located on the registration flyer, which you can find in your TRAKTOR KONTROL F1 product box.
2. Click [Create](#) to save the Activation Request File (ActivationRequestFile.html). A Save File dialog will open and let you select a target folder.
3. Save the Activation Request File to the desired target folder.

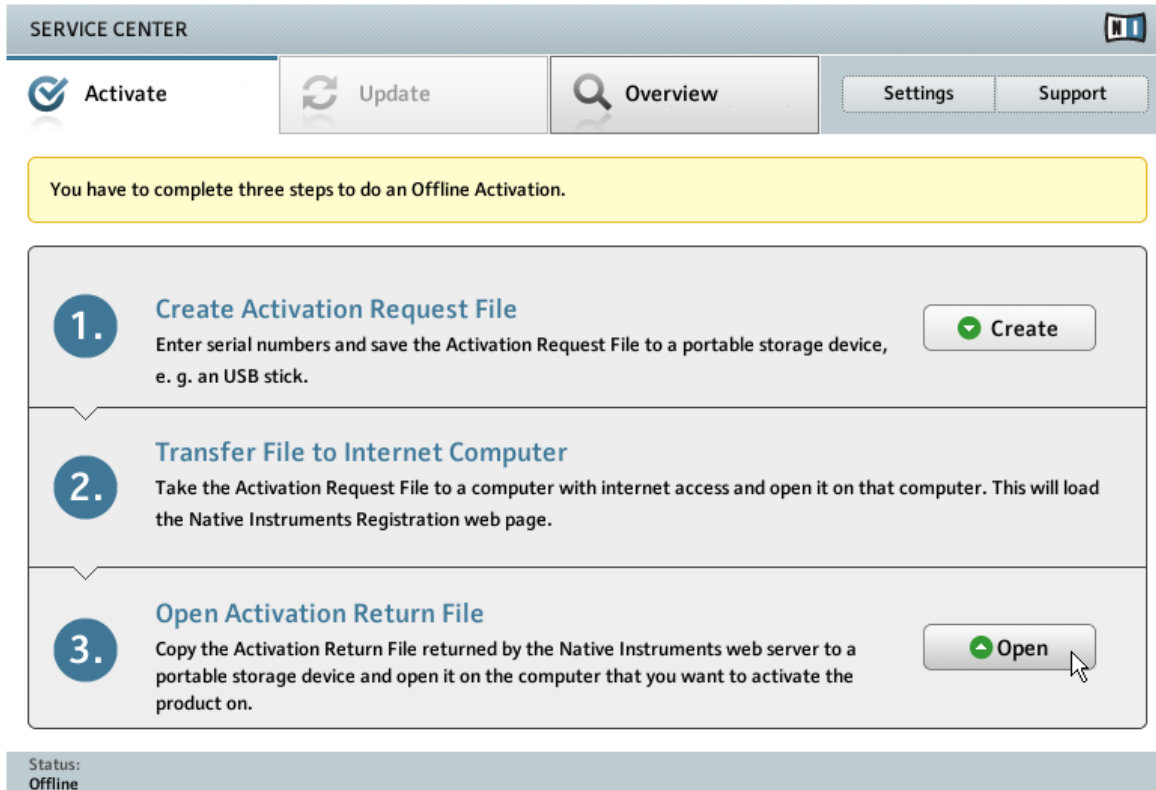
### 3.3.4 Transfer the Activation Request File



The offline activation procedure.

1. Copy the Activation Request file to a portable storage device and transfer it to a computer with internet connection.
2. Open the Activation Request file by double-clicking it.
3. Follow the instructions on the Service Center product activation web page. As a new Native Instruments user you will need to create a new account before you can log in.
4. Transfer the Activation Return file back to your audio computer.

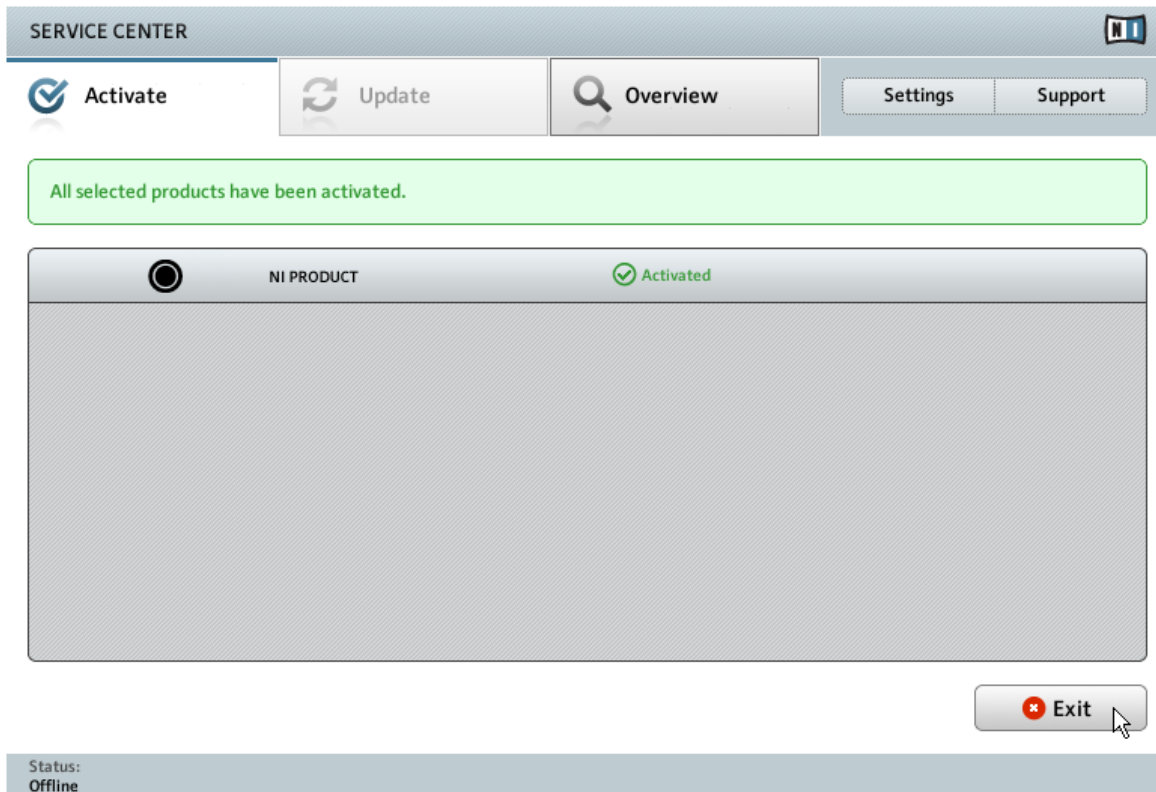
### 3.3.5 Open the Activation Return File



The offline activation screen of Service Center.

1. On your audio computer, start Service Center again. In the [Continue without connection to the internet](#) area at the bottom of the screen, click [Offline](#).
2. Select the [Activate](#) tab and click [Open](#) to load the Activation Return file.

### 3.3.6 Finish the Offline Activation



Service Center confirming the product activation.

After you have opened the Activation Return file, Service Center confirms that the product has been activated successfully. You can quit Service Center by clicking [Exit](#).

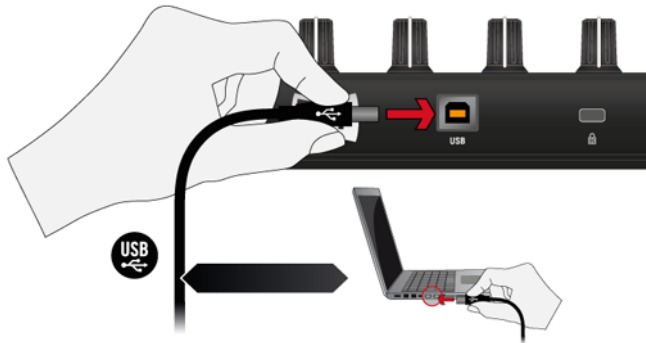
- To obtain updates for your products, log in under [www.native-instruments.com/updates](http://www.native-instruments.com/updates), using your Native Instruments user account information. Download all relevant updates from the Personal Update Manager to your internet computer, transfer them to your music computer utilizing portable storage media, and install them.

## 4 Connecting the TRAKTOR KONTROL F1 to Your Computer

### 4.1 Connecting the Controller on Mac OS X

Once the TRAKTOR software installation is complete:

1. Connect the TRAKTOR KONTROL F1 to a USB 2.0 (or later) port on your computer.



2. The TRAKTOR KONTROL F1 was designed as a plug-and-play device so no further configuration is necessary. You can now use your F1 controller with the TRAKTOR software. Proceed with chapter [↑5, What's Next?](#).



You cannot install the TRAKTOR KONTROL F1 on a USB 1.1 port — a USB 2.0 port is required.



USB hubs may also be used; however, Native Instruments cannot guarantee compatibility with all USB hubs currently available on the market.



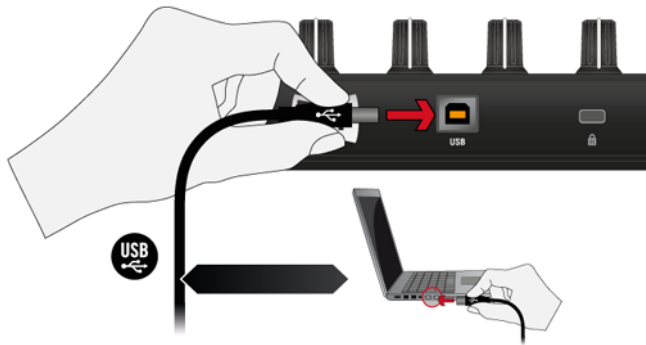
USB hubs may also be used; however, Native Instruments cannot guarantee compatibility with all USB hubs currently available on the market.



## 4.2 Connecting the Controller on Windows

Once the TRAKTOR software installation is complete:

1. Connect the TRAKTOR KONTROL F1 to a USB 2.0 (or later) port on your computer.



2. The TRAKTOR KONTROL F1 was designed as a plug-and-play device so no further configuration is necessary. You can now use your F1 controller with the TRAKTOR software. Proceed with chapter [↑5, What's Next?](#).



You cannot install the TRAKTOR KONTROL F1 on a USB 1.1 port — a USB 2.0 port is required.



USB hubs may also be used; however, Native Instruments cannot guarantee compatibility with all USB hubs currently available on the market.



Every time the TRAKTOR KONTROL F1 is plugged into a USB port that was not used during the initial installation, Windows will reinstall the drivers on the given port. This is normal behavior for USB devices on Windows.



USB hubs may also be used; however, Native Instruments cannot guarantee compatibility with all USB hubs currently available on the market.



Every time the TRAKTOR KONTROL F1 is plugged into a USB port that was not used during the initial installation, Windows will reinstall the drivers on the given port. This is normal behavior for USB devices on Windows.

## Windows XP

On Windows XP, another driver installation procedure might be initiated by the operating system after connecting the controller. In that case:

1. Choose **No** if Windows asks you to search the Internet for a driver.
2. Choose **Automatic** when Windows asks you how to install the software.
3. Click **Finish** to complete the installation.
4. After you have completed the installation procedure, the installer will start again. You need to pass through the same sequence of installer steps once again in order to install all required driver components. This is an intended behavior, so just follow along to finish the installation.

---

## 5 What's Next?

- For information on how to operate the F1 controller and how to use it with the TRAKTOR DJ software, please refer to the **TRAKTOR KONTROL F1 Manual**. Don't miss out on its tutorial section! You can access the TRAKTOR KONTROL F1 Manual via the *Open Manual...* entry from the [Help](#) menu in the TRAKTOR software.
- For further information regarding the Controller Editor software, there is the **Controller Editor Manual** in the Controller Editor's documentation folder. You can access the manual via the *Open Manual...* entry from the [Help](#) menu in the Controller Editor software.
- For information on all TRAKTOR features, refer to the **TRAKTOR 2 Manual**. You can access the TRAKTOR 2 Manual via the *Open Manual...* entry from the [Help](#) menu in the TRAKTOR software.